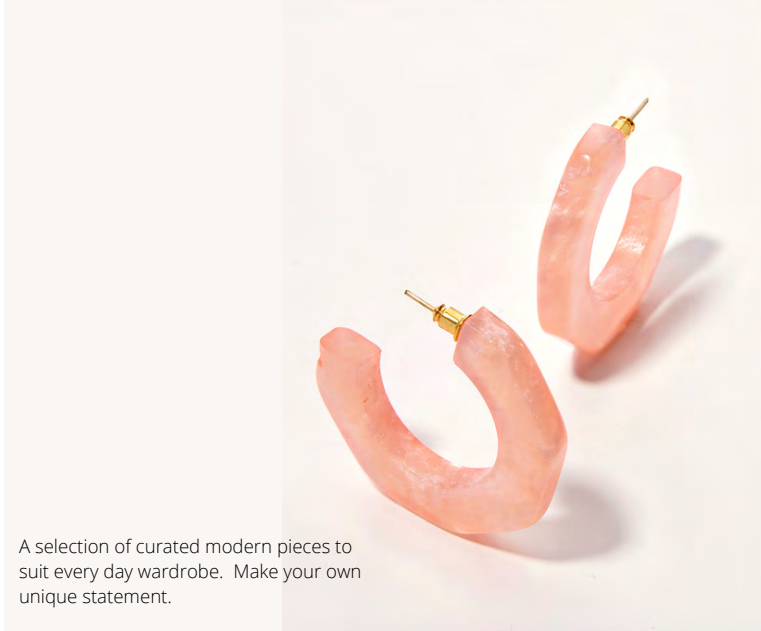




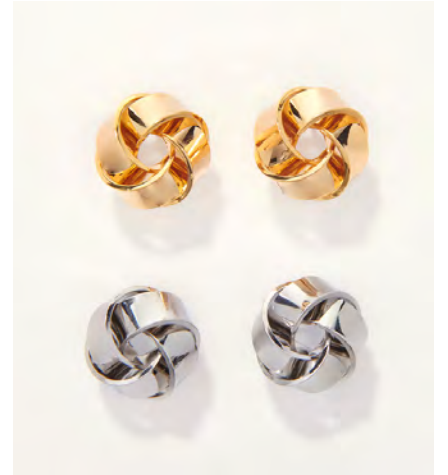
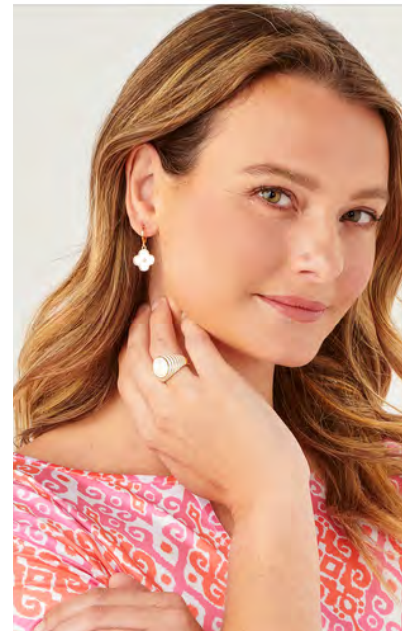
ASTRAL

BY CHARLIE PAIGE

# PRETTY LIL' THINGS



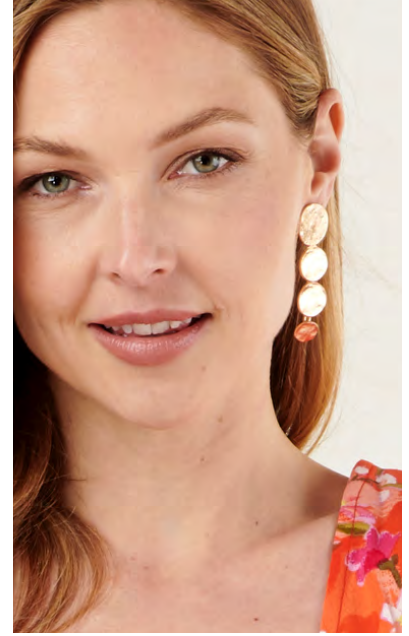
A selection of curated modern pieces to suit every day wardrobe. Make your own unique statement.



# ARTISANAL



Artisanal jewellery pieces in unique bold shapes and textures to complete your summer look.



# LIL INDULGENCES



# BEAD BOX



Eclectic beads in earthy hues accented with beautiful turquoise and ambers to compliment your summer wardrobe.



# MIDNIGHT

The dark hues of midnight accented with metallics for a glam yet understated look.



# SUBTLE OPULENCE

Perfect for your jewelry box for special occasions.  
Make your life's moments special with this collection of fine pieces.





CONTACT YOUR SALES REP TO BOOK APPOINTMENTS

[www.giftcraft.com](http://www.giftcraft.com)